

**MAPK6 Antibody (monoclonal) (M02)****Mouse monoclonal antibody raised against a partial recombinant MAPK6.****Catalog # AT2792a****Specification**

---

**MAPK6 Antibody (monoclonal) (M02) - Product Information**

Application	WB, IF
Primary Accession	<a href="#">Q16659</a>
Other Accession	<a href="#">BC035492</a>
Reactivity	Human, Mouse, Rat
Host	mouse
Clonality	Monoclonal
Isotype	IgG2b Kappa
Calculated MW	82681

**MAPK6 Antibody (monoclonal) (M02) - Additional Information****Gene ID** 5597**Other Names**

Mitogen-activated protein kinase 6, MAP kinase 6, MAPK 6, Extracellular signal-regulated kinase 3, ERK-3, MAP kinase isoform p97, p97-MAPK, MAPK6, ERK3, PRKM6

**Target/Specificity**

MAPK6 (AAH35492, 612 a.a. ~ 721 a.a) partial recombinant protein with GST tag. MW of the GST tag alone is 26 KDa.

**Dilution**

WB~~1:500~1000

IF~~1:50~200

**Format**

Clear, colorless solution in phosphate buffered saline, pH 7.2 .

**Storage**

Store at -20°C or lower. Aliquot to avoid repeated freezing and thawing.

**Precautions**

MAPK6 Antibody (monoclonal) (M02) is for research use only and not for use in diagnostic or therapeutic procedures.

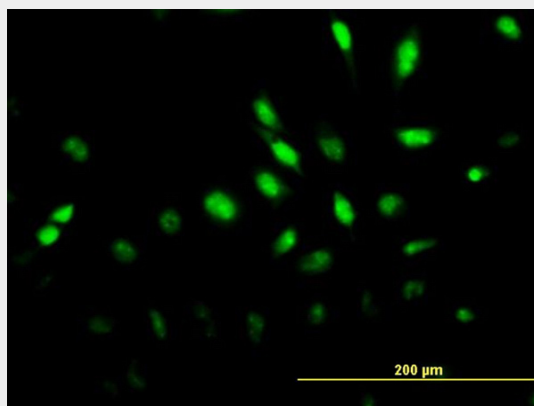
**MAPK6 Antibody (monoclonal) (M02) - Protocols**

Provided below are standard protocols that you may find useful for product applications.

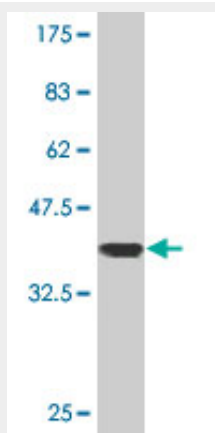
- [Western Blot](#)
- [Blocking Peptides](#)

- [Dot Blot](#)
- [Immunohistochemistry](#)
- [Immunofluorescence](#)
- [Immunoprecipitation](#)
- [Flow Cytometry](#)
- [Cell Culture](#)

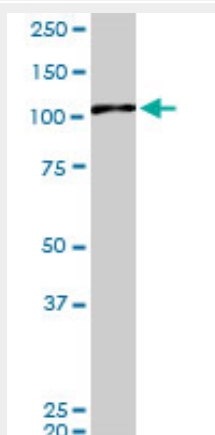
### MAPK6 Antibody (monoclonal) (M02) - Images



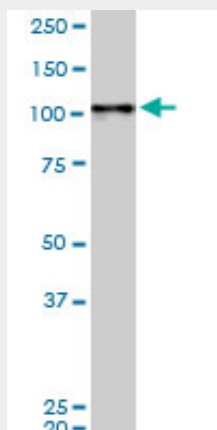
Immunofluorescence of monoclonal antibody to MAPK6 on HeLa cell. [antibody concentration 10 ug/ml]



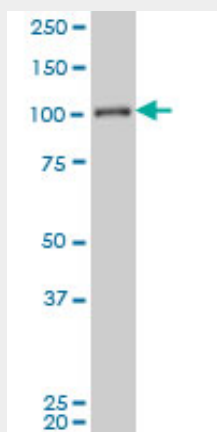
Antibody Reactive Against Recombinant Protein. Western Blot detection against Immunogen (37.84 KDa) .



MAPK6 monoclonal antibody (M02), clone 4C11. Western Blot analysis of MAPK6 expression in PC-12((Cat # AT2792a )



MAPK6 monoclonal antibody (M02), clone 4C11. Western Blot analysis of MAPK6 expression in Raw 264.7((Cat # AT2792a )



MAPK6 monoclonal antibody (M02), clone 4C11 Western Blot analysis of MAPK6 expression in Jurkat ( (Cat # AT2792a )

### MAPK6 Antibody (monoclonal) (M02) - Background

The protein encoded by this gene is a member of the Ser/Thr protein kinase family, and is most closely related to mitogen-activated protein kinases (MAP kinases). MAP kinases also known as extracellular signal-regulated kinases (ERKs), are activated through protein phosphorylation cascades and act as integration points for multiple biochemical signals. This kinase is localized in the nucleus, and has been reported to be activated in fibroblasts upon treatment with serum or phorbol esters.

### MAPK6 Antibody (monoclonal) (M02) - References

Activation loop phosphorylation of the atypical MAP kinases ERK3 and ERK4 is required for binding, activation and cytoplasmic relocation of MK5. D?l?ris P, et al. J Cell Physiol, 2008 Dec. PMID 18720373.Regulation of ERK3/MAPK6 expression by BRAF. Hoeflich KP, et al. Int J Oncol, 2006 Oct. PMID 16964379.Diversification of transcriptional modulation: large-scale identification and characterization of putative alternative promoters of human genes. Kimura K, et al. Genome Res, 2006 Jan. PMID 16344560.The status, quality, and expansion of the NIH full-length cDNA project: the Mammalian Gene Collection (MGC). Gerhard DS, et al. Genome Res, 2004 Oct. PMID 15489334.N-Terminal ubiquitination of extracellular signal-regulated kinase 3 and p21 directs their degradation by the proteasome. Coulombe P, et al. Mol Cell Biol, 2004 Jul. PMID 15226418.